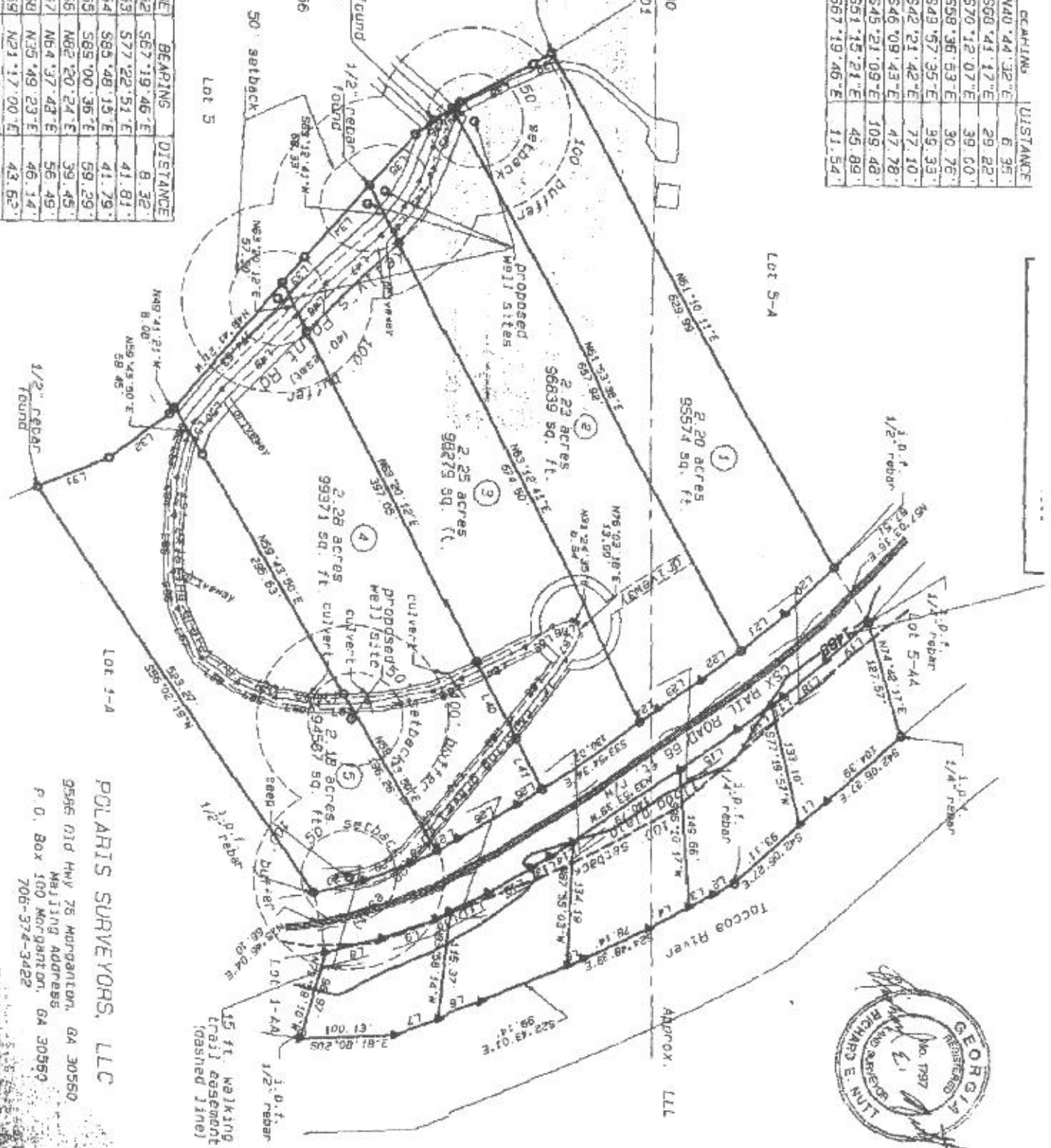


LINE	BEARING	DISTANCE
L42	N40°44'32"E	6.35'
L43	S68°41'47"E	29.22'
L44	S70°12'07"E	39.60'
L45	S58°36'53"E	30.76'
L46	S49°57'35"E	35.33'
L47	S42°21'42"E	77.10'
L48	S46°09'43"E	47.78'
L49	S45°21'09"E	109.48'
L50	S51°15'21"E	45.89'
L51	S67°19'46"E	11.54'

47.09'
48.61'
62.36'
59.68'
15.66'
44.88'
52.71'
23.02'
27.89'
79.40'
42.96'
15.96'
80.40'
59.09'
70.60'
60.60'
51.26'
54.09'
25.86'
30.21'
21.46'
24.83'
28.44'
52.72'
55.40'
82.26'
79.60'
35.46'
102.03'
72.54'
47.72'
10.06'
86.72'
22.74'
32.58'
61.07'

P.O.D.  
 nming et frompin found  
 9.P.S. P.  
 34.57' 2.2723°N  
 84.20' 26.47254°W  
 elevation = 1701.956

LINE	BEARING	DISTANCE
L52	S67°19'46"E	8.32'
L53	S77°22'51"E	41.81'
L54	S85°48'15"E	41.79'
L55	S85°00'36"E	69.29'
L56	S62°20'24"E	39.45'
L57	N64°37'48"E	56.49'
L58	N35°49'23"E	46.14'
L59	N21°17'00"E	43.62'
L60	N05°19'08"E	45.24'
L61	N01°52'37"W	50.90'
L62	N10°23'25"W	71.88'



**POLARIS SURVEYORS, LLC**  
 9546 Old Hwy 76 Morganton, GA 30550  
 Mailing Address  
 P. O. Box 100 Morganton, GA 30550  
 706-376-3422

Final Plat